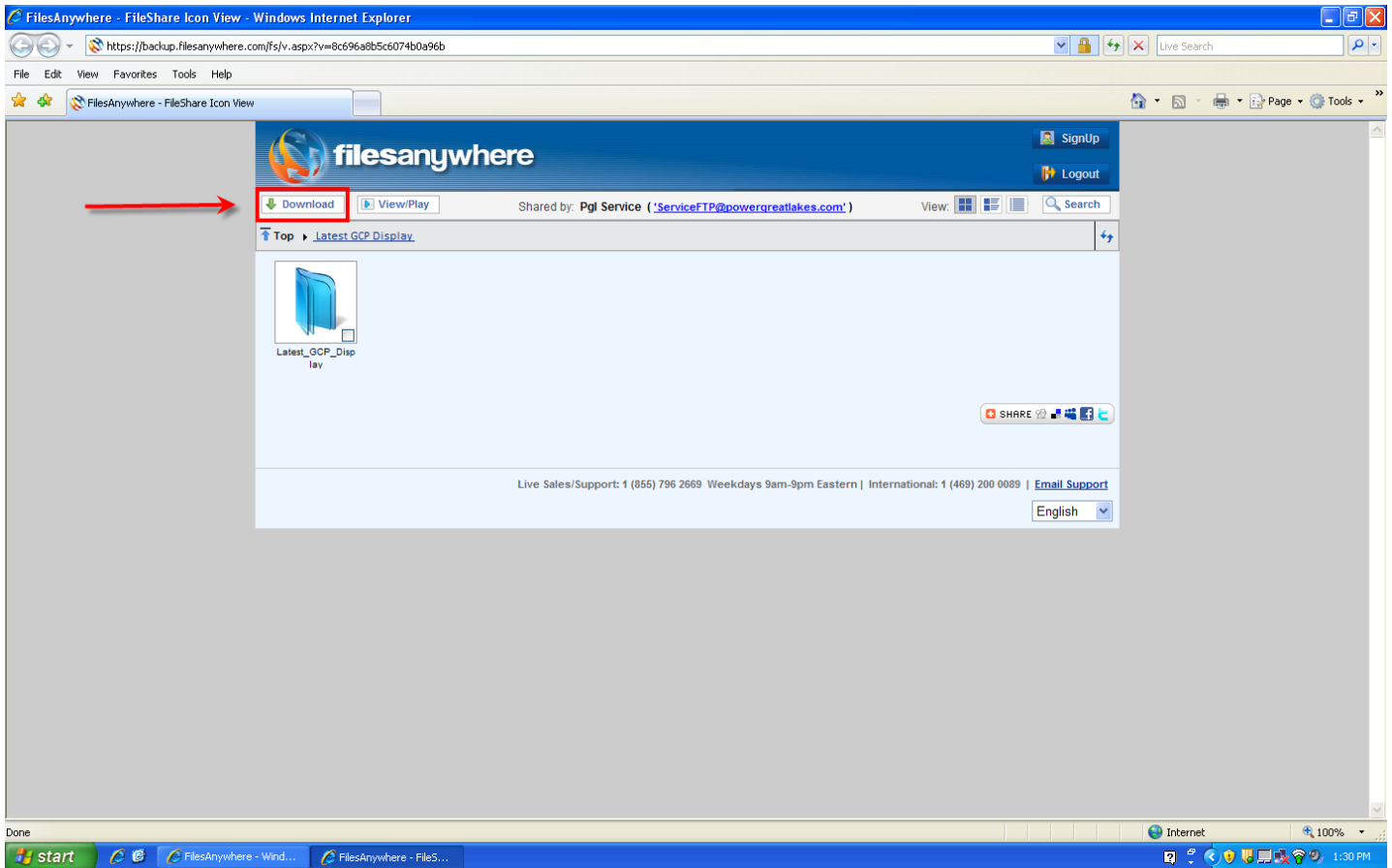
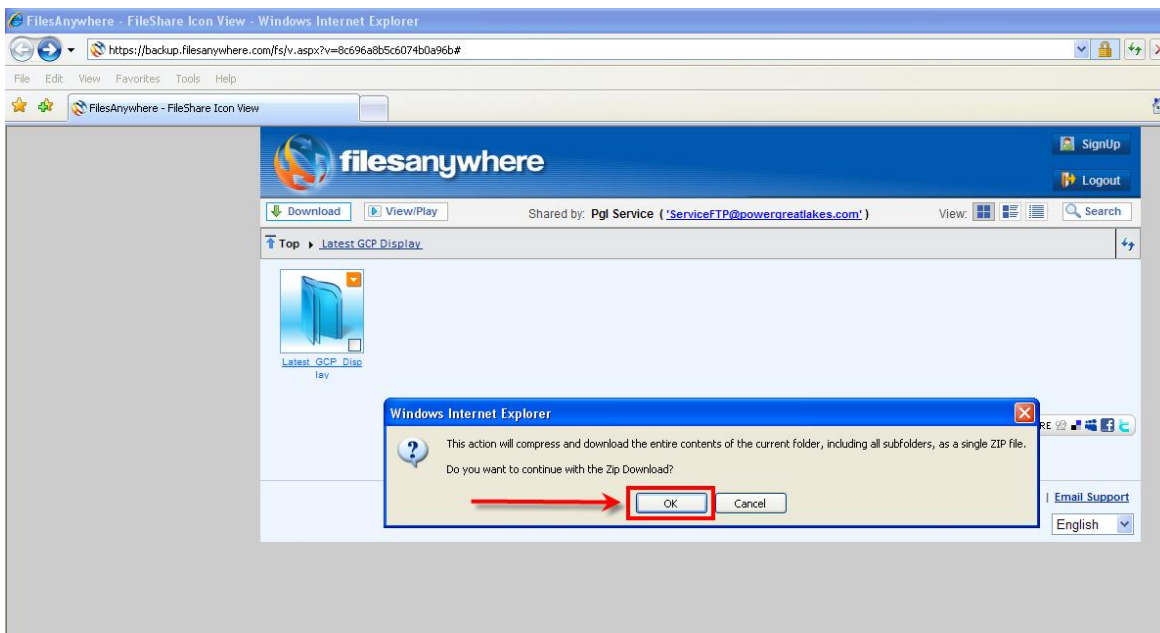


## HOW TO INSTALL GCP DISPLAY AND ECOM DRIVER

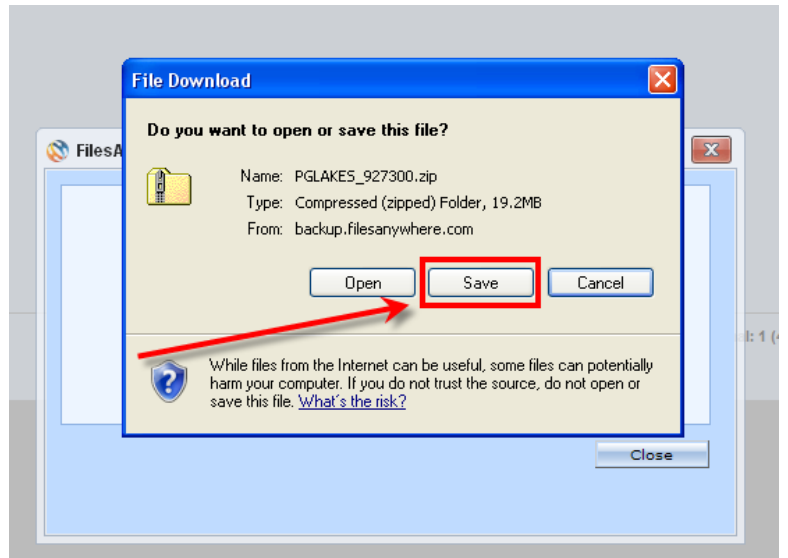
1) Press the download button as shown below



2) Select OK when it asks to zip the download

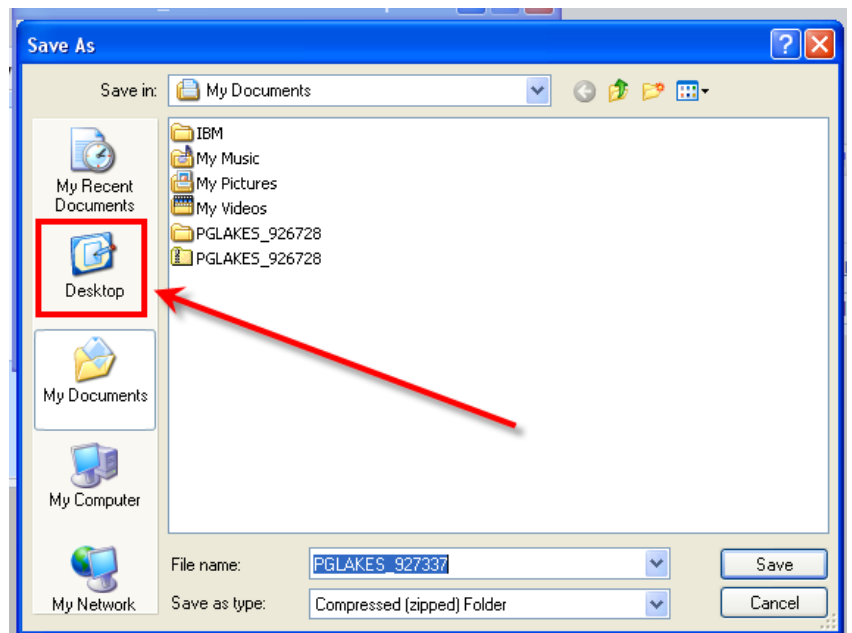


3) Press "SAVE"

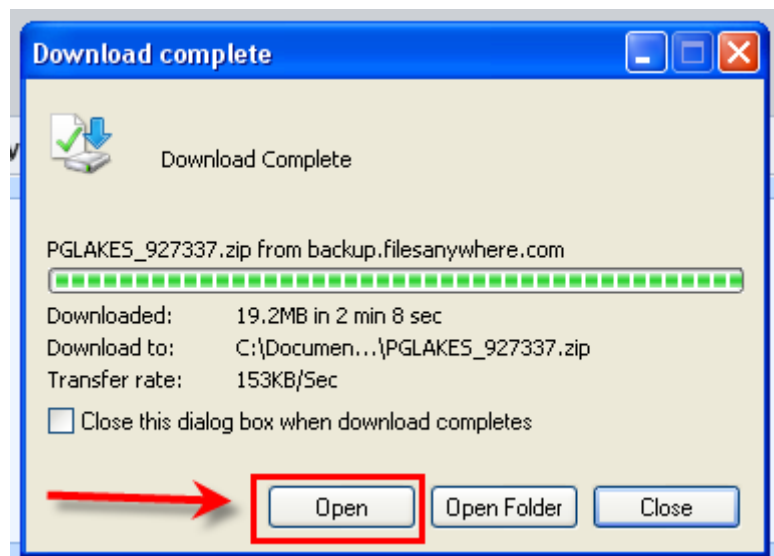


4) Select the "Desktop" icon to save the ZIP file onto your desktop.

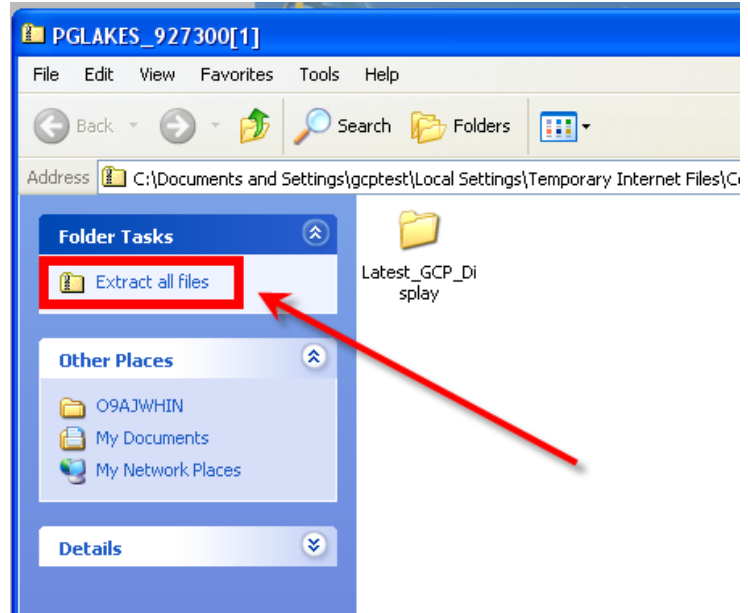
5) Press the Save Button



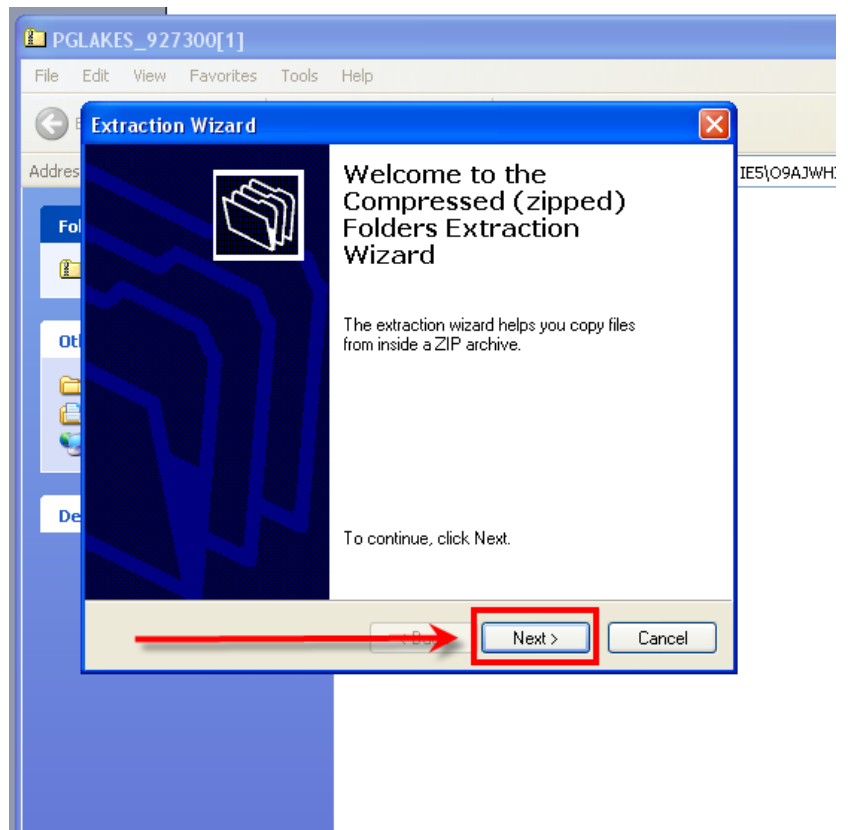
6) Select the "OPEN" button



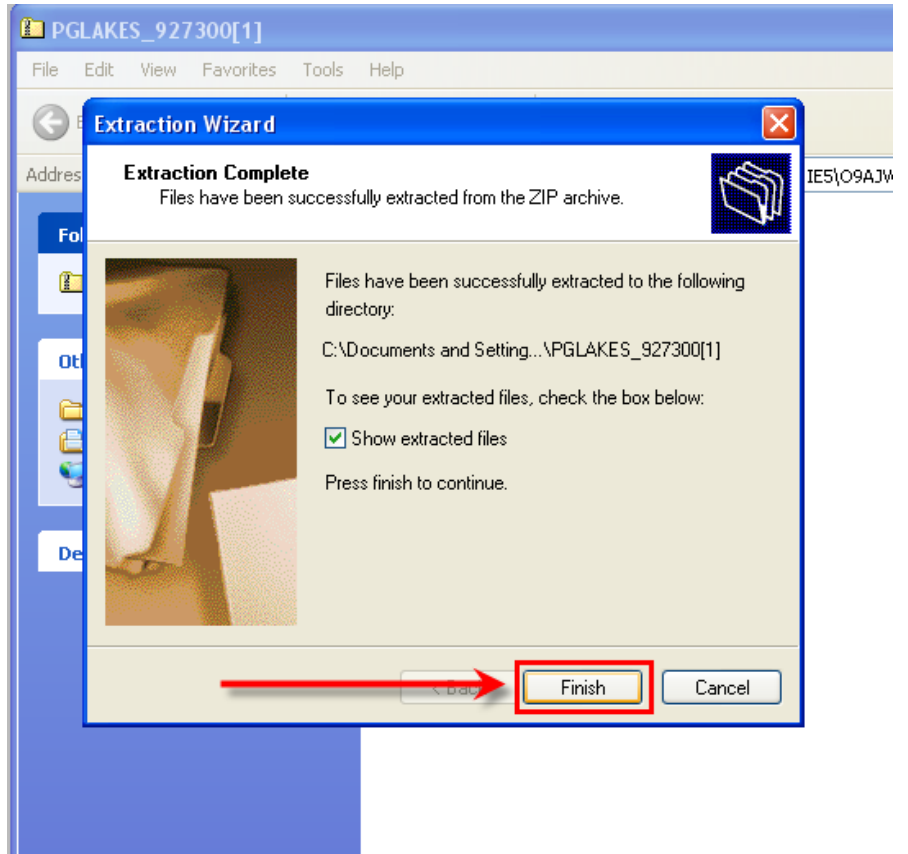
7) Select "Extract all files"



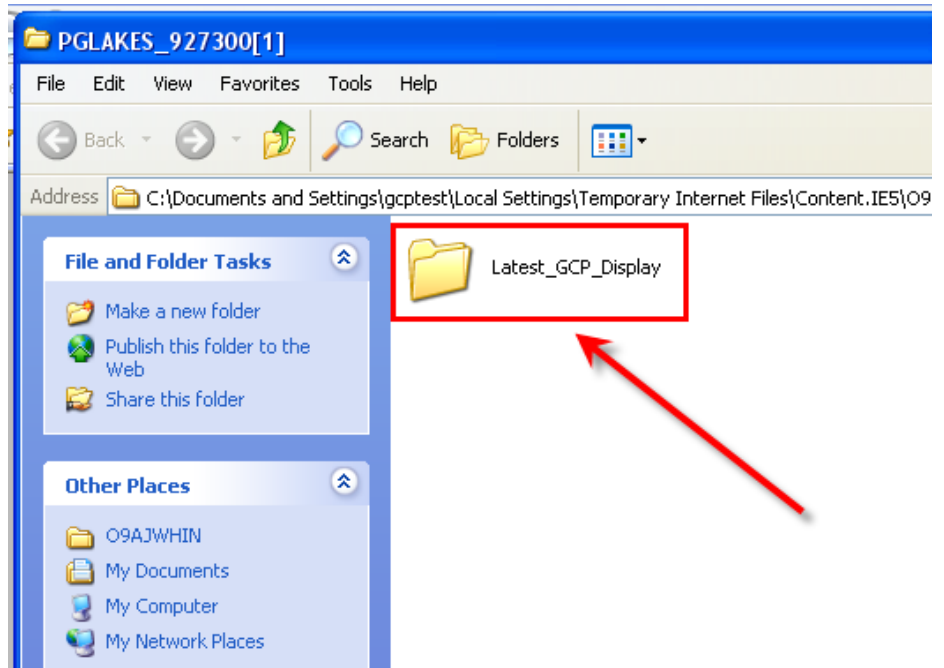
8) Press the next button until you get to the finish screen



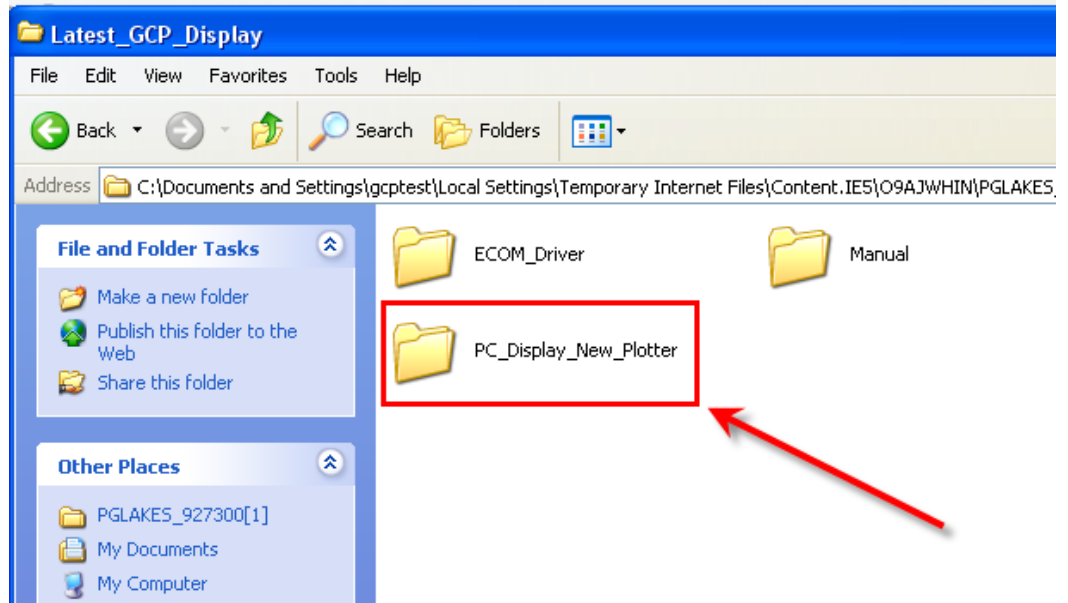
9) Select the finish button



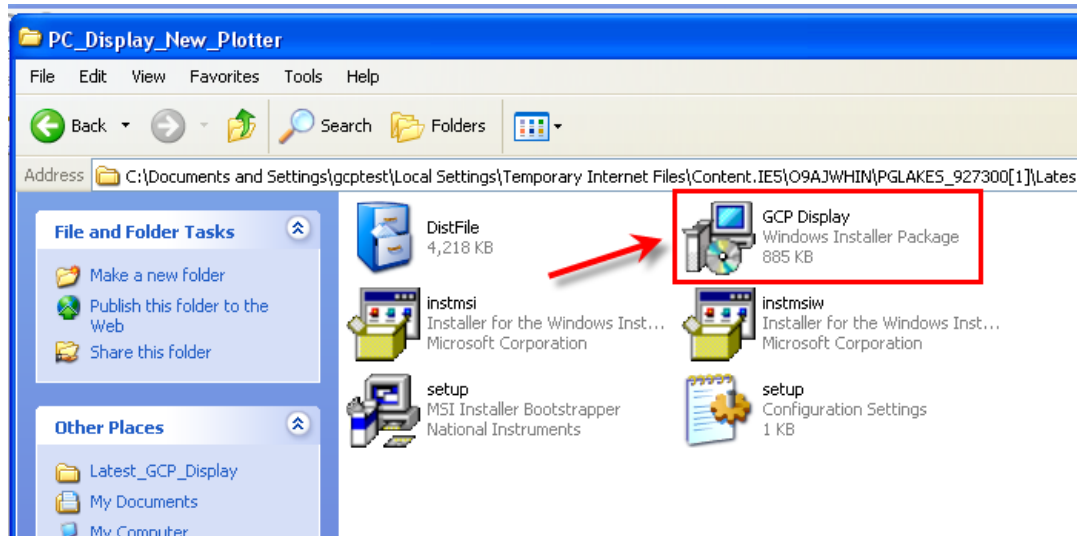
10) Double click the folder "Latest\_GCP\_Display"



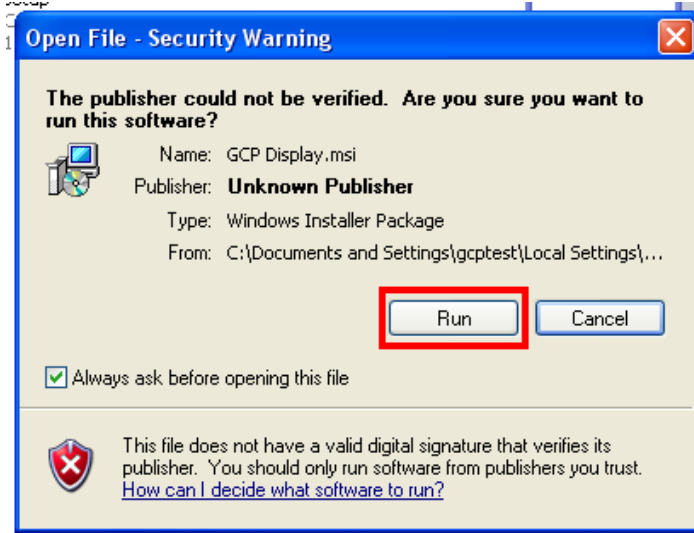
11) Double click the folder “PC\_Display\_New\_Plotter”



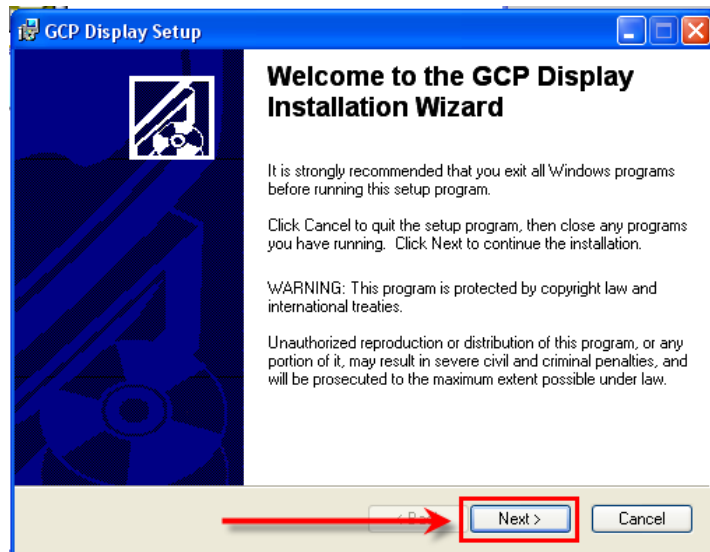
12) Double click the file name “GCP Display”



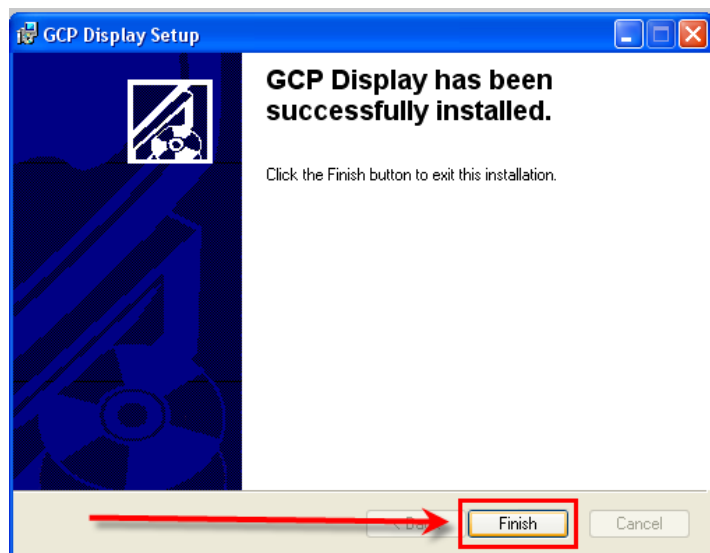
13) Select "Run"



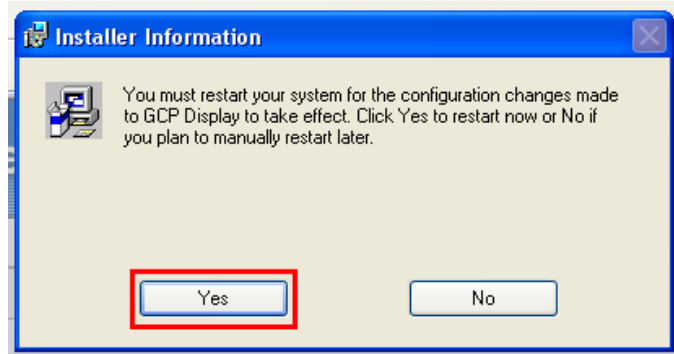
14) Select "Next" until you get to the Screen that says finish.



15) Select "Finish"



16) It will ask you to restart your computer.  
Select "Yes"

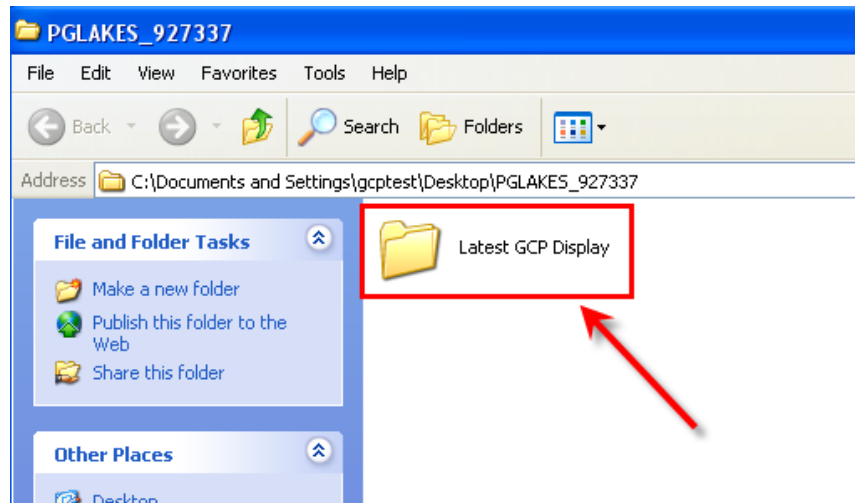


**NOTE: ONCE THE RESTART IS COMPLETE YOU WILL NEED TO INSTALL THE ECOM DRIVER. FOLLOW THE NEXT STEPS TO INSTALL THE ECOM DRIVER**

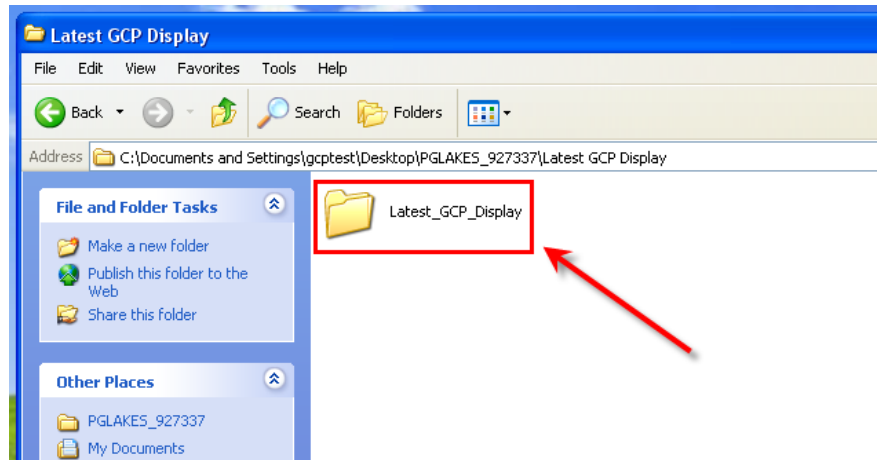
17) Double click the icon "PGLakes\_927337" shown below



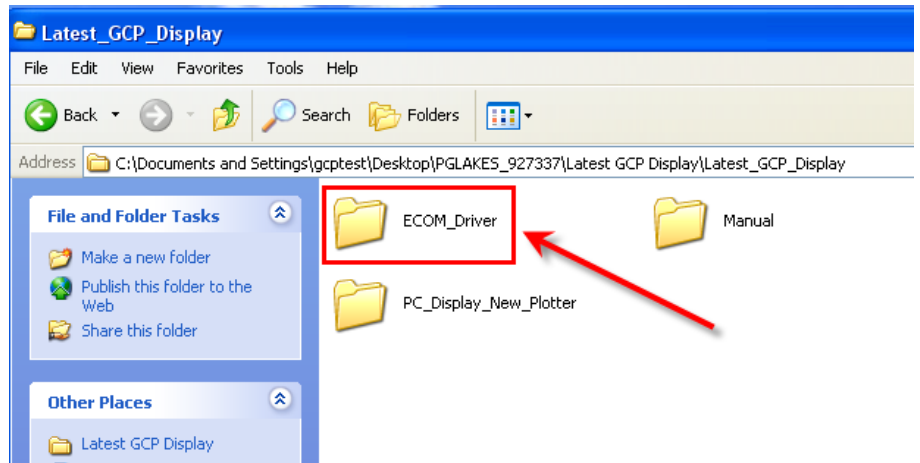
18) Double click the Latest GCP Display folder



19) Double click the folder again

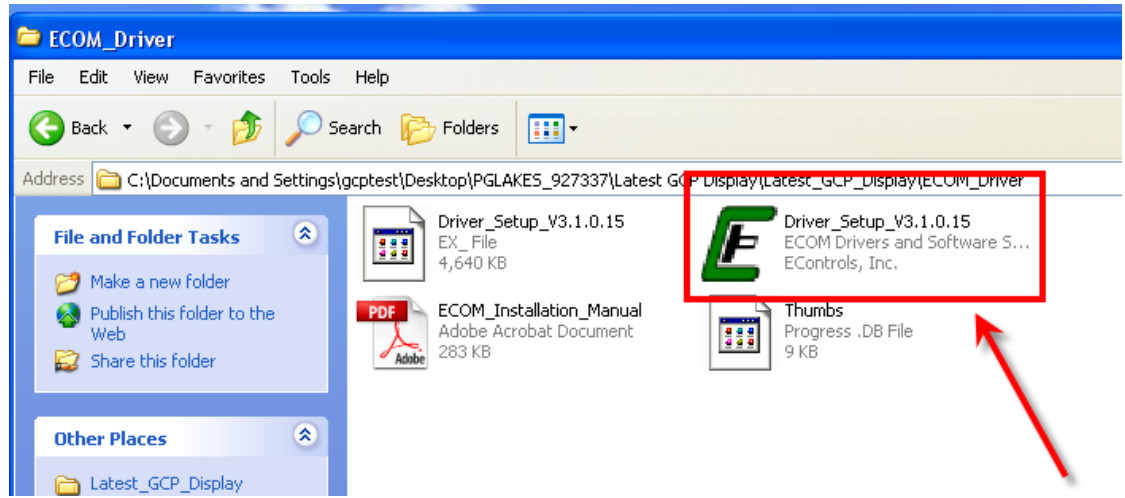


20) Double click the ECOM\_Driver folder

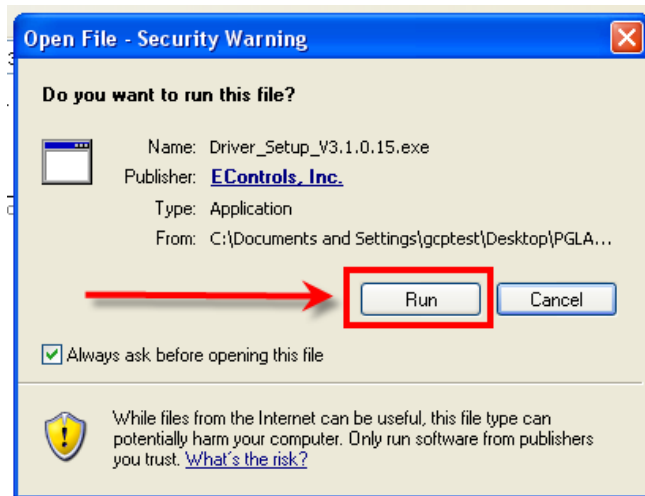




21) Double click the Driver\_Setup\_V3.1.0.15



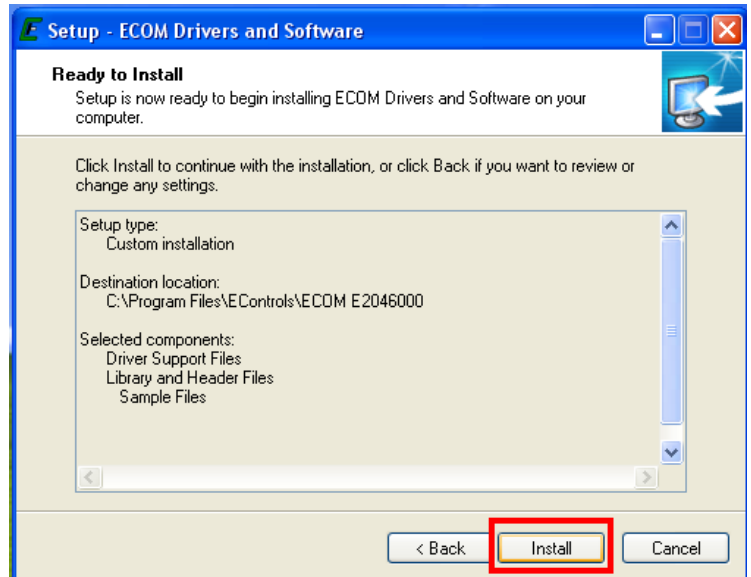
22) Double click the "RUN" button



23) Select the next button until you get the install option



24) Select the install button

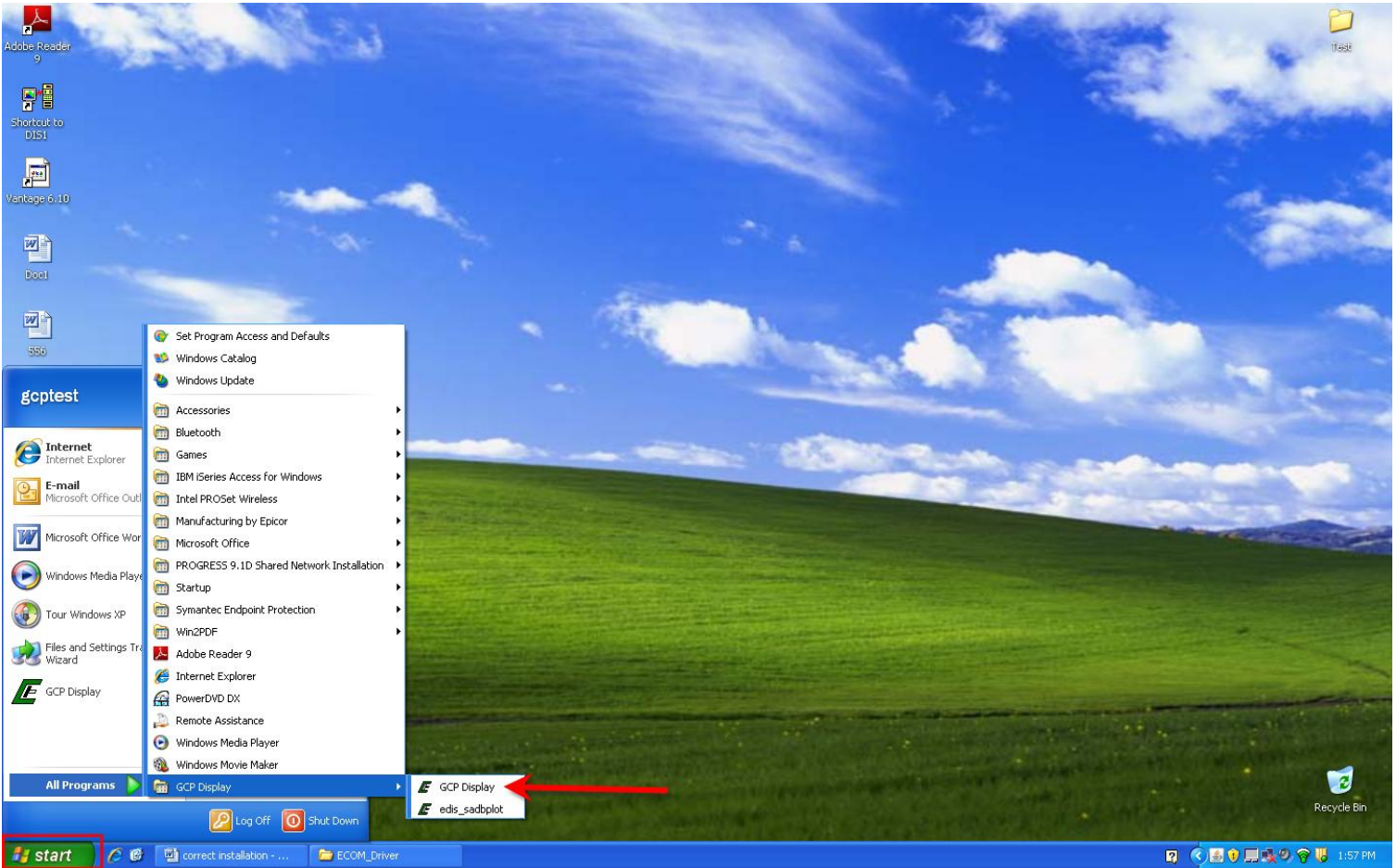


25) Select the "Finish" button



**NOTE: YOU ARE NOW READY TO LAUNCH THE GCP DISPLAY SOFTWARE**

- 26) Select the “start” button on the bottom left of the desktop screen
- 27) Select “All Programs”
- 28) Select “GCP Display”
- 29) Select the GCP Display option as shown below



- 30) Enter your password in the box (upper case or lower case is okay)
- 31) Check the bottom check box labeled “Save password and S/N”
- 32) Press Ok

